

# ACCELERATE LEARNING OUTCOMES with INSIGHTS

by

**hatch**<sup>®</sup>

*The Early Learning Experts<sup>®</sup>*





# Ignite<sup>TM</sup> by hatch

Ignite by Hatch<sup>TM</sup> is a dynamic, research-backed, digital-learning platform that captivates early learners with standards-aligned experiences. Ignite accelerates grade-level readiness across seven key domains with an emphasis on math and literacy.

## With Insights from Ignite, you can:

- Generate valuable, whole-class progress reports to guide rich PLC discussions & better align PreK-1 grade bands.
- Provide parents and caregivers a personalized progress report of their child's growth by standard and skill.
- Better align instruction to school improvement plan goals by analyzing progress across classrooms and sites.
- Bring rich, detailed data to IEP/504 plan meetings, ensuring true individualized support for each child.



- Use unbiased data to plan targeted instruction, knowing when to reteach, remediate, or accelerate.
- Involve caregivers in the learning process through activating playtime at home, or through offline caregiver lessons at home!



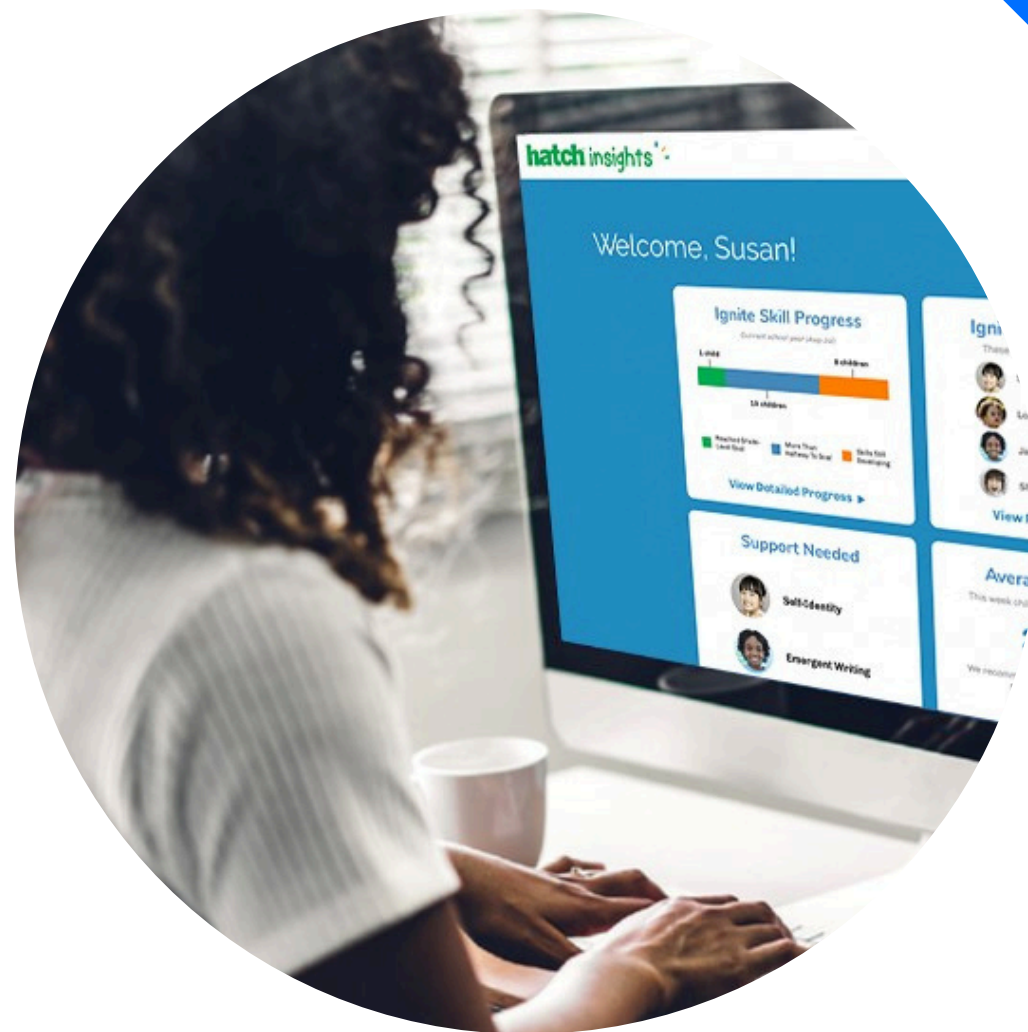
# Ignite**PANEL**

by hatch

IgnitePanel by Hatch™ revolutionizes early childhood classroom instruction with interactive, standards-aligned lessons and activities. Hatch's software is loaded with hands-on, engaging, and developmentally appropriate content, enabling teachers to foster collaborative learning experiences.

## With Insights from IgnitePanel, you can:

- Effortlessly plan and implement research-based activities tailored to individual learners.
- Plan anywhere! Create your daily schedule from any browser, and it will automatically upload to your panel.



- Develop standards-aligned skills in both English and Spanish, ensuring children are assessed accurately.
- Access student portfolios to share growth using work samples captured throughout the school year.

- Identify your students' most popular activities to help build lessons with our engaging content.
- Access offline lessons, support, and professional development tips with ease!





# IgniteTABLE

by hatch

IgniteTable by Hatch™ provides a collaborative learning experience where children engage with peers to build prosocial, communication, and cooperative learning skills. As young learners play, IgniteTable automatically captures authentic work samples and data, allowing teachers to spend less time administering assessments and more time teaching!

## With Insights from IgniteTable, you can:

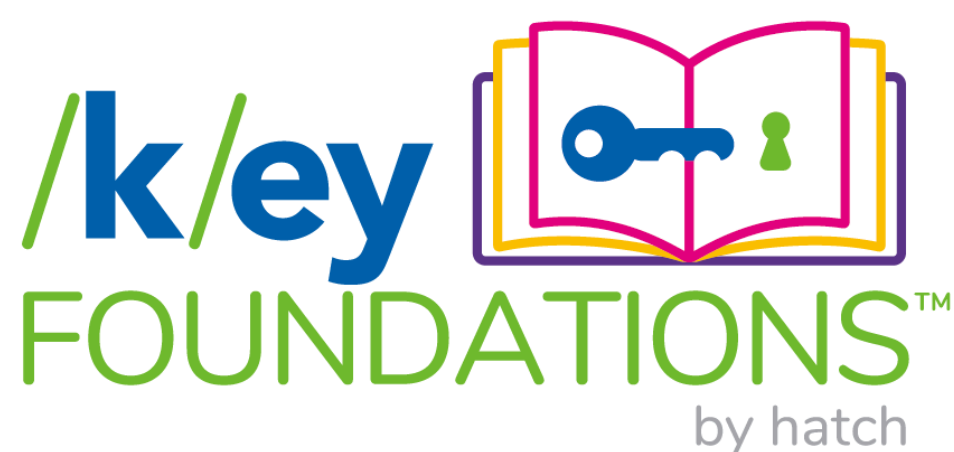
- Examine authentic work samples, data, and evidence of student interactions.
  - Streamline assessment by determining which skills children have mastered, and which they need more time to develop.
- Intervene early if students need support with speech, executive functioning, or prosocial skills development.
  - Capture student proficiencies with data and unbiased observations of interactions with peers.



- Access valuable professional development prompts embedded throughout each student activity.
- Communicate more effectively with families and caregivers by sharing classroom snapshots.



# Literacy Data Points to Analyze Alongside Insights Reports



- Designed to build core skills in oral language, phonological awareness, and early print concepts, Key Foundations™ Pre-K kits make literacy learning fun and accessible with pre-decodable readers, engaging activities, and more!



- The Code is the Key™ for Kindergarten is a deeper dive into phonics, phonemic awareness, and structured decoding practice. These kits offer rich, multisensory resources that make the code of written language clear and engaging!
- Students can strengthen reading, writing, and spelling skills with The Code is the Key™ for first grade featuring daily lessons and advanced decoding tools. Explicit instruction and ongoing assessment ensure continued literacy growth and prepare students for confident reading and writing success.





# hatch<sup>®</sup>

*The Early Learning Experts<sup>®</sup>*

[hatchearlylearning.com](http://hatchearlylearning.com)

